

# School Newsletter



Dear Parents,

It may not feel like it because of all the rain we've had recently, but spring has definitely sprung in the field behind the school. We now do our PE lessons to the sound of lambs bleating and the daffodils are awake and waving around the school – it's brightened up another rather wet and grey week!

The children have all been busy this week learning Easter songs, immersed in topics, and doing the most wonderful dragon inspired writing. We know they were very disappointed when the cross-country event was cancelled by the organiser so we've contacted them asking for an update and we'll share the new date with you as soon as we can. We'd like to recognise all the parent support we received and the offers and organisation of transport (and packed lunches) – thank you!

We hope you found the Stoke, Wonwell and Bigbury parents evening appointments useful this week and you had a good opportunity to discuss what your child is doing well and their next steps. It's always lovely to look through the children's books and see their progress journey – we are so proud of them all. The children's effort and behaviour were recognised in a visit from the Trust this week. Our visitors were blown away by how confidently our children could speak about their learning, the school values and the behaviour at Holbeton – well done everyone.

I hope you all have a good weekend – I'm hoping to tidy up my garden and plant some bulbs – I have my fingers crossed the sun makes an appearance!

- Small but Mighty

Mrs Honywill  
Headteacher



# Diary Dates

## Spring Term 4

25.3.24	Cricket Workshop – all classes will need to wear PE kits
27.3.24	Easter Bonnet competition (wear your Easter hats to school) Egg rolling (decorate a hard-boiled egg and bring to school) HSA Easter Egg Hunt (in school)
28.3.24	Easter Service at the Church <b>11 am</b> Parents invited to attend



## Carswell Farm Dates

Friday 22<sup>nd</sup> March - Stoke



## Timings of the School Day

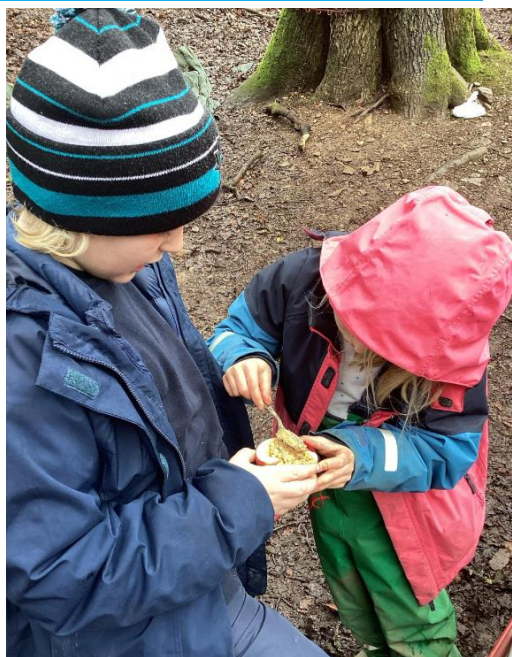
The main school gate and classroom doors open from 8.45 until 8.55am which gives the children a ten-minute window to settle into their classrooms. The main gate is closed at 8.55am and registers are taken in class between 8:55-9:05. Children arriving after 9:05 will be registered as late. We understand the roads in Holbeton can become congested at drop off time and parking can be difficult. Thank you for all that you are doing to ensure your child is arriving on time.

8.45	School gates open - all classes arrive at the main playground gate
8.55	School gate closes and registration begins
9.05	Registration closes and morning learning starts
10.45	Morning break time
11.00	Morning learning continues
12.25	Lunchtime
13.25	Afternoon learning starts
15:25	End of school day





# Forest School



Tuesday 19 <sup>th</sup> March	Years 1, 2, 3
Tuesday 26 <sup>th</sup> March	Years 4, 5, 6



# Classroom News

## Nursery and Reception

---

This week we have been exploring volcanoes. First the children shared their knowledge of lava and what happens when a volcano erupts. Then, we recreated this using a sand volcano, bicarbonate of soda, vinegar and paint. I demonstrated first and then the children took great delight in doing it themselves! We talked about the chemical reaction that happens. I brought in some bones that I found on a beach with my family. Although not dinosaur bones, the children were excited to handle them and asked lots of questions to try and work out what creature they were from. They are actually dolphin bones!



## Year 1 and Year 2

---

At Carswell Farm last week, Wonwell Class were learning about the changes that happen on the farm during Spring. They used their senses to explore Spring colours and sounds. We also used clay found on the farm to make different animal sculptures.





## Year 3 and Year 4

---

Mothecombe had an 'egg-traordinary' time at Carswell Farm this week learning about eggs, how they are fertilized, the difference between organic and non-organic and the parts of an egg. They also got their hands stuck into different soil types and they made their own soil painting postcards – wow!



## Year 5 and Year 6

---

This week for art, the children did some observational drawings of human and then dragon eyes. They were so focused, looking closely at the shape, sizes, patterns and shading. Incredible work, well done!





## VILLAGE CLOTHES SWAP TO SUPPORT HOLBETON SCHOOL ASSOCIATION

WHEN: WEDNESDAY 20TH MARCH

WHERE: MILD MAY COLOURS PUB, HOLBETON

WHAT TIME: 6.30-8.30PM

COST: £10 A TICKET (INCLUDES A DRINK AND SOME NIBBLES)

### HOW DOES IT WORK?

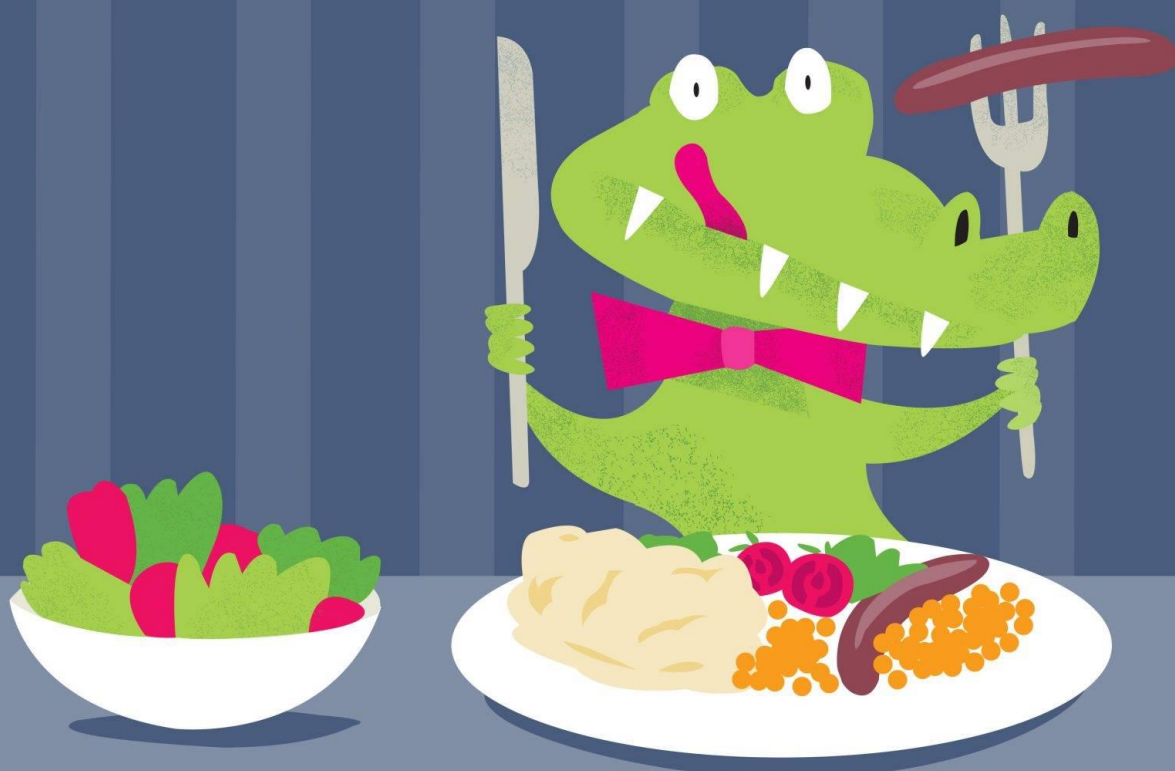
PRIOR TO THE EVENT PLEASE DROP OFF ANY UNWANTED CLOTHES (ADULTS AND CHILDRENS) TO THE SCHOOL OR PUB AND WE WILL COLLECT AND ARRANGE READY FOR YOUR PERUSAL AT THE EVENT. YOU WILL THEN BE ABLE TO TAKE 5 ITEMS HOME WITH YOU. IF YOU DO NOT HAVE ANY UNWANTED CLOTHES YOU ARE STILL WELCOME TO JOIN THE EVENT!

PLEASE PURCHASE TICKETS IN ADVANCE FROM  
HOLBETON SCHOOL, THE VILLAGE SHOP OR THE PUB



**10** | 10 ways to help  
**A DAY** | balance your physical  
and mental health

# Eat well



Notice what you eat that is fab for...

- Your brain
- Your body
- Your energy
- Your calm
- Your happy

visit: [normalmagic.co.uk](http://normalmagic.co.uk)

# In the News

Something to talk about...

You may like to use the questions at home to discuss this week's world news.



## In the news this week

Coca-Cola has announced it will temporarily be removing labels from some of its bottles to trial 'label-less' packaging. The trial will see labels removed from the 500ml Sprite and Sprite Zero bottles and replaced with an embossed logo on the front of the pack. The product and nutritional information will be laser-engraved onto the back. The label-less bottles will be trialled in some shops in London, Bristol, Manchester and Brighton and Hove.

### Things to talk about at home ...

- Find five different food items at home that have packaging and labels. Have a look at the labels and talk to others at home about what they include. What do you think is the most important information? Do you believe that all the packaging the items have is necessary?
- In general, do you feel people should do more to reduce the amount of packaging they consume? If so, how?

Please note any interesting thoughts or comments

Share your thoughts and read the opinions of others

[www.picture-news.co.uk/discuss](http://www.picture-news.co.uk/discuss)



© Picture News 2024